

Sancreed, Penzance, TR20 8QS

Approximate Area = 5543 sq ft / 514.9 sq m (includes Annexe)

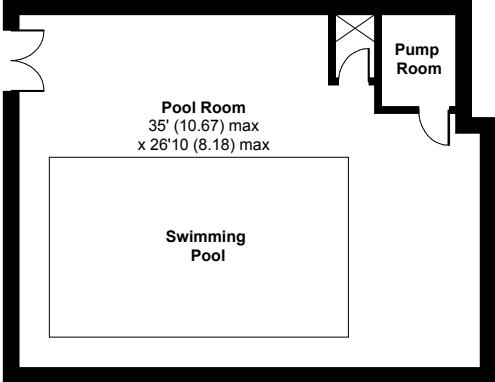
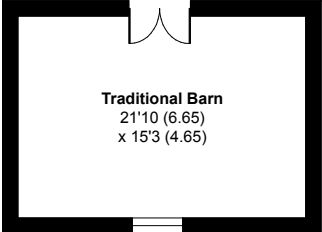
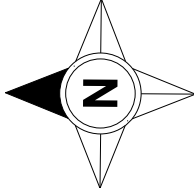
Outbuilding(s) = 1256 sq ft / 116.7 sq m

Cottage x 3 = 1533 sq ft / 142.4 sq m

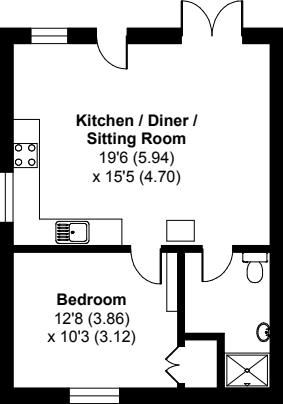
Garage = 272 sq ft / 25.3 sq m

Total = 8604 sq ft / 799.3 sq m

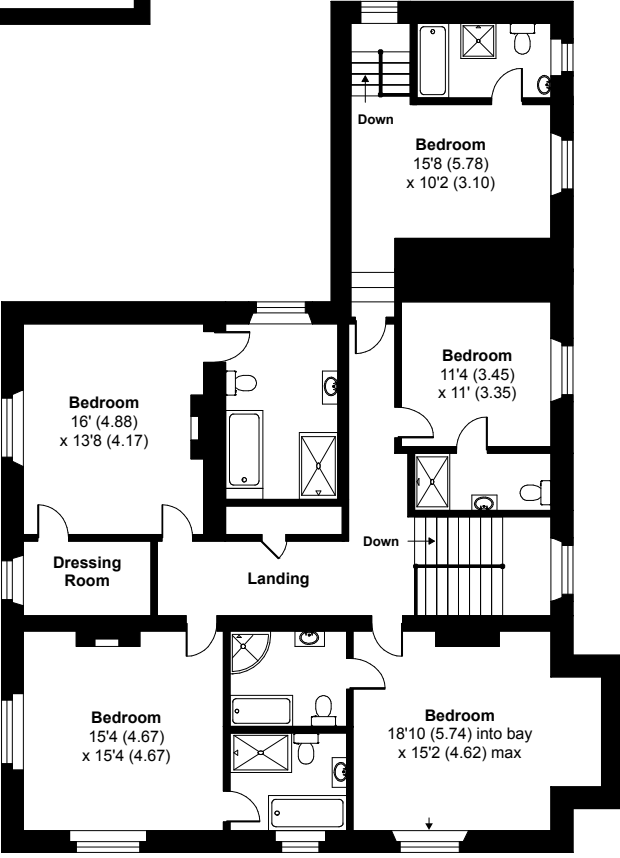
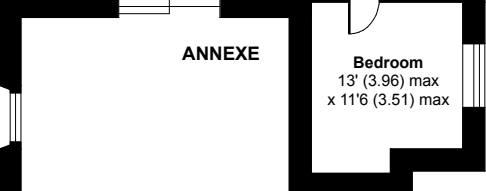
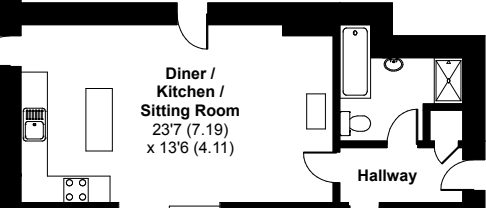
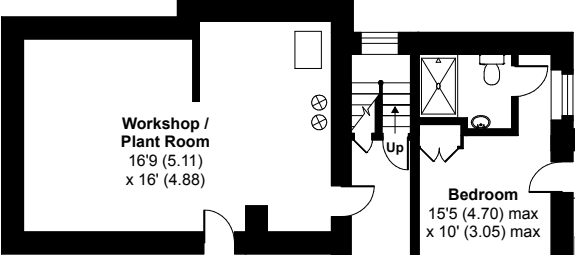
For identification only - Not to scale



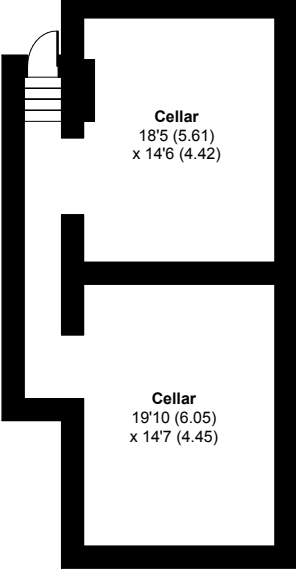
POOL HOUSE



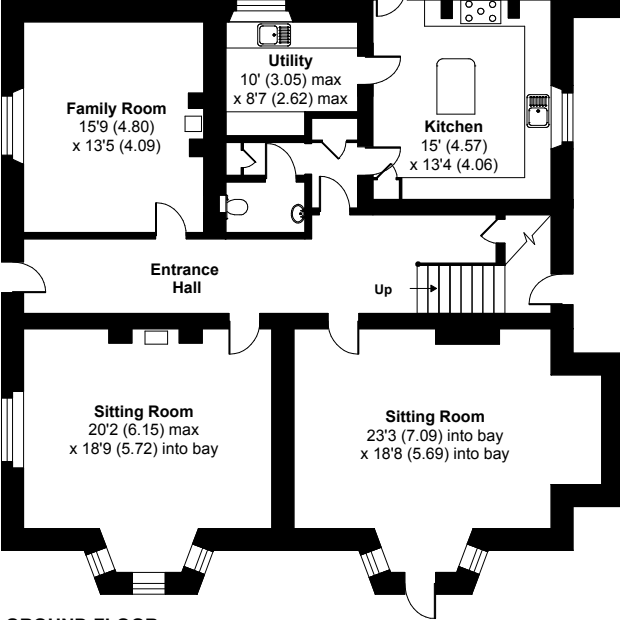
COTTAGE X 3



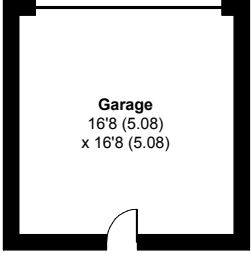
FIRST FLOOR



LOWER GROUND FLOOR



GROUND FLOOR



Garage



Floor plan produced in accordance with RICS Property Measurement Standards incorporating International Property Measurement Standards (IPMS2 Residential). © nitchecom 2023. Produced for Rohrs and Rowe. REF: 1031153